



Pastel Artists Canada
“Purely Pastel”

www.pastelartists.com

Member of IAPS www.pastelinternational.com

Spring Newsletter, February 2004



*Painting
the
Seasons
in
Pastel*

See page 3 for artists & titles.



Pastel Artists Canada - Purely Pastel Spring Issue, 2004

Pastel Artists Canada

www.pastelartists.com

History

The Pastel Artists Canada was founded in 1989 by a small group of artists in the Burlington area. Its membership has since grown to 200 artists. Known previously as Pastel Artists of Ontario, Canada, the name was changed May of 2003 to reflect our diverse membership.

Purpose

To promote public appreciation of Art in Soft Pastel and to improve the skills of artists working in this fine art medium.

- PAC sponsors workshops led by well-known International Instructors plus our own teachers.
- Our Newsletter "Purely Pastel" is issued quarterly and has a lively exchange of information with international Pastel Societies. It is now available via our web site to members.
- PAC Members automatically become part of the International Association of Pastel Societies and may participate in IAPS Biennial Convention. As well as participation in PAC's own Member Shows and Juried Shows, members may participate in the Shows of the Pastel Society of Eastern Canada, in Quebec.
- Participation in the PAC Members Show is open to all members for a small fee.
- Signature Society - Granted to members who have been accepted in 3 PAC juried shows.
- Participation on our PAC Website for a small fee.
- Master Pastellist Signature Category MPAC.

Membership in PAC is open to all who are interested in the medium of Pastel.

The membership is based on the calendar year and is due each January. New members joining September 1, will receive membership for the current year and the following year.

Membership Fee: \$30 @ year
Outside Canada Fee: \$45 Cdn. @ year
Membership Chair
97 Robinhood Dr.,
Dundas, ON L9H 4G2

PAC Contacts

Rosemary Simpson, Milton Tel: 905-335-8074
President, Director of Web Services
rasimpson@cogeco.ca Fax: 905-335-9929

Ursula Reese, Bobcaygeon Tel: 705-731-0288
Past President
ursula.reese@sympatico.ca Fax: 705-731-0358

Vicki Brophay, Guelph Tel: 519-822-8603
Vice President calles@kw.igs.net

Ann Kelly Walsh, Burlington Tel: 905-336-0993
Secretary lakwalsh@sympatico.ca

Janet Parker, Dundas Tel: 905-627-0222
Treasurer mike-parker@sympatico.ca

Cindy Riach, Dundas Tel: 905-627-5747
Membership criach@cogeco.ca

June Gauthier, Flesherton Tel: 519-924-2202
Newsletter Editor jgauthier@bmts.com

Lynne Ritchie, Toronto Tel: 416-604-3315
Publicity lynne.ritchie@attcanada.net

Maureen Dorinda, Janetsville Tel: 705-277-1603
Society Record Keeper maureen.dorinda@sympathico.ca

Tim Daniels, Burlington Tel: 905-632-1978
Area Rep Southern ON tdaniels2@cogeco.ca

Administration of Web Participants
Normand Baril, Nepean Tel: 613-825-7840
Area Rep Eastern ON normand103@sympatico.ca

Eldora Taylor, Meaford Tel: 519-538-5181
Area Rep Mid-West ON eldorataylor@aol.com

Inak Gieysztor, Montreal Tel: 514-985-2118
Area Rep Quebec janekinag@yahoo.com

Barry Richman, Grand Bend Tel: 519-238-6213
Director-at-large huronart@ezlink.on.ca

Sally Jackson, Oakville Tel: 905-844-0207
Master Pastellist Chair sally@jackson.to

PAC Canada Web Site:

Members of PAC may join the online artists on our site. Participants must be current members of PAC and pay a Web renewal fee of only \$25 per year, due June 1 of each year.

Those participants who join January of the current year are exempt the June renewal fee. The site functions as an art portfolio for the participants and news central for PAC. Since it works as a co-op, the posting of artist bio and work is very economical.

The site has the latest workshop registration forms for download and back issues of the newsletter.



From the President's Easel

Pastel, what a wonderful medium. Pick it up and you have immediate contact with the paper to draw and paint at the same time. Our cover 'Painting the Seasons in Pastel' is work from some of our members.

The cover of our next newsletter will showcase as many of the works registered for the upcoming members show as possible. Be sure to send along a photo/slide or email image to our editor when you send in your registration. I always look forward to the members show because it is when our members pick their best and sometimes most innovative work for display. It makes for an electric exhibition.

Our Annual General Meeting on May 1, 2004 in Oakville will take place the same day as the opening of the Members Show. Oakville is one of those rare cities that still has a dynamic main street with interesting shopping and great eateries. It also boasts a harbour and historic sites to enjoy all within walking distance of the Anastasia Gallery. Make a day of it, deliver your painting, enjoy the sites, attend the AGM and finish it off at the Members Show Opening.

Before we know, it will be June. The registration for our paint in/out at Bridgewater is in this newsletter. This weekend is always a lot of fun. No matter what the weather a lot of painting gets done. The studio is large and bright. The comfy rustic cabins are perfect for a casual weekend. Warning ... the food is excellent, as is the company. This is a weekend to relax, do some painting, renew old friendships and meet new people.

I hope you are thinking ahead to the PAC Juried Show in September. The registration will be in the next newsletter. This show is juried by slide to allow all members to participate, no matter the distance. To help with the process we have included some tips for taking slides, hope it helps. Best advice - give yourself lots of time.

Note our 5-day workshop in the Ottawa Area. The registration is in this newsletter. The spaces are limited so we are giving members first choice. Mette Baker is opening her home studio for this event. We cannot thank you enough Mette for sharing your lovely studio and property in Dunrobin with us.

Finally, please make your voice heard. Attend the AGM in Oakville on May 1st. The association is only as effective as the members who participate. We need to hear from you. If you cannot make it, send in your proxy sheet and suggestions. I will look forward to seeing as many of you as possible.

Yours

Rosemary

Front Cover

Painting the seasons in pastel

Clockwise from upper left corner:

Winter Sun - Peck Lake, by Ursula Reese. Selected by UNICEF for their 2004 Christmas Card Collection.

Misty Morning, by Barb Harris

GDay Farm, by Andrea Ross

Kaleidoscope World I, by Ann Walsh

Mouth of Montreal River, by Eldora Taylor

In Divine Silence, by Elsa Black

Meaford, by Milt Haines

Lonesome Pine, by Barb Elmslie

By the River, by Rosemary Simpson

PAC WORKSHOPS - 2004

Pamela Carter, PSA, PSC, PESC

April 3 & 4, 2004

Burlington Art Centre, Burlington,
Ontario

Full
Waiting list only!

We are looking forward to this weekend workshop with Pam. You will be caught up by her boundless energy and joy of painting. The workshop will focus on Still-Life and is designed to accommodate pastellists of all levels.

Location: Burlington Art Centre, Children's Studio (a large spacious room). There is lots of parking available at the Centre. There is a parking charge.

Lunch: There is a café at the centre or brown bag it.

Time: 9:30 am to 4 pm.

Price: \$130 for members, \$160 for non-members.

Participants: Minimum of 10, Maximum of 16.

Coordinator: Rosemary Simpson, 3019 Britannia Rd., RR2, Milton, ON. L9T 2X6 Telephone: 905-335-9074

Email: rasimpson@cogeco.ca.

Pastel Pizzazz, 5 Day Workshop

Ottawa Area, September 20 - 24, 2004

Claire Schroeven Verbiest, KA, PSA

Location: The Home Studio of Mette Baker, Dunrobin, Ontario. This is a beautiful spot. Mette's studio is spacious and full of light. Step outside into the forested property. The lake is right at the front door. This workshop held in such a wonderful area with Claire as the instructor will fill up fast.

This workshop is open to students of all levels.

Landscapes, night scenes and still life will be the genres of choice. The course will include demonstrations, critiques and a slide presentation. Claire Schroeven Verbiest is a Belgian native, who is fluent in both English and French. She lived the Congo and in Germany before moving to San Jose, California with her husband and their two children. She is an awarding artist and a signature member of several art societies. She is considered one of the finest pastel artists in the San Francisco Bay area. Come and share Claire's enthusiasm and joy for this versatile, direct and brilliant medium. You will leave equipped with the knowledge needed to create

Pastel Artists Canada - Purely Pastel Spring Issue, 2004

strong and spirited paintings.

Price: 5 days instruction, \$475 for members, \$525 for non-members. Members will be given preference until June 1, 2004 and then it will be open to non-members.

Participants: Minimum of 10, maximum of 12.

Coordinator: Normand Baril, 24 Merkel Drive, Nepean, ON
Tele: 613-825-7840 Email: normand103@sympatico.ca

Deadline for minimum participants: August 1, 2004

Participants will receive a supplies list and directions to location after registration. **Registration form on page 9.**

Would you like more Workshops?

Usually PAC has one major workshop per year. It takes a lot of planning and work to make one of these events successful. This year we are experimenting with having two workshops. In the past we had number of one day workshops which have disappeared due to the fact no one has requested them. If you would like to have one day workshops revived, let us know. The workshops can be at different levels, in different areas of the country and they can focus on any number of subjects. We will be bringing up this topic at the Annual General Meeting on May 1, 2004, in Oakville. We would appreciate your suggestions and comments. If you cannot attend the meeting please use the proxy included in this newsletter to let us know your thoughts.

PAC Online - Tim Daniels

www.pastelartists.com

P.S. Tim has been away to the sunny South. If you have been waiting to hear from him, please do not worry he will catch up with you soon. In the meantime, check out the new work that has been posted into the Online Gallery by Ann Walsh, Kelly Dodge, Shirley Black, Cindy Riach, Eldora Taylor and new participant Robin Sheard Nyikos. Welcome Robin.

If you feel you are ready to show your work in the PAC Online Gallery contact:

Tim Daniels
284 North Shore Blvd., East
Burlington, ON
L7T 1W9

Tel: 905-632-1978 Email: tdaniels2@cogeco.ca

Tim will be happy to answer any questions or help you with technical problems you may have with scanning images, photographing your work or sending jpeg's by email.

The Gallery's main objective is to provide a promotional site for participating PAC artists. Each artist's section is their own portfolio. Let us know how the site helps you.

To sign on as a new participant in the Online Gallery:

1. Download a form at the membership page on the PAC web site: www.pastelartists.com
or
2. Contact Tim for a mailed form.

Membership Report - Cindy Riach

Membership in PAC is open to all who are interested in the medium of Pastel. The membership is based on the calendar year and is due each January. New members joining after September 1st will receive membership for the current and following year. **The annual fee is \$30. Fees are renewed each calendar year and are subject to change.**

A warm welcome to our new members:

Waltrand Bluml - Winchester, New Hampshire*
Frank Hall - Kitchener, Ontario*
Muriel McDonald - Saskatoon, Saskatchewan
Janette O'Neil - Lakefield, Ontario
Heidi Rohde - Burlington, Ontario
Des Sydney - Waterloo, Ontario

*See Mini-bio on page 5.

I hope you have noticed, we are attracting new members from east and west, north and south. **Welcome all!**

Your 2003 Membership expired December, 2003. Lots of renewals have come in for 2004, but there are more to come. Remember to send your 2004 Membership Renewal (\$30) to me so you can keep receiving the newsletter and attending PAC's exciting events.

Cindy Riach
PAC Membership
97 Robinhood Dr.
Dundas, ON
L9H 4G2

Telephone: 905-627-5747 Email: criach@cogeco.ca

Attending to business:

Make it a New Year's Resolution!

As artists we want to paint and sometimes finding the time is difficult. We certainly do not want to use the free time we have, to think about the business end of things. Observe the artists who are getting ahead. You will find that they have had to made time not only for their painting but the paper work too. Filling out entry forms and getting them in the mail, recording your work by taking slides and recording details on cards or computer (both is best), building a portfolio for galleries, etc., etc., takes a lot of attention and energy but it does pay off. I am not there yet but I am working on it. How about you?

Calendar of Events:

March 31 - Postmarked deadline for Master Pastellist Entry.
April 1 - IAPS entry slides received by date.
April 1 - Postmarked deadline for Member Show Entry.
April 3,4 - Pam Carter Workshop, Burlington Art Centre.
May 1 - Member Show Opening, Anastasia Gallery, Oakville.
May 1 - Annual General Meeting, Oakville Library.
May 15 - Deadline registration for Bridgewater weekend.
June 11 to 13 - Bridgewater Retreat Paint in/out weekend.
July 2 - Postmark deadline PAC 13th Open Juried Show Entry.
Sept. 17 - Opening of PAC 13th Annual Open Juried Show.
Sept. 20 to 24 - 5 day Workshop Claire Schroeven Verbiest.

Member News.....

A Tribute to Joy Orzy by Ursula Reese

Joy passed away in December 2003. She gave many popular workshops for us. She shared her extensive knowledge freely and with joy, true to her name. She always set up interesting still-life subjects and taught us how to do beautiful portraits in pastel. Due to illness she did not participate during the last couple of years. Joy will be sadly missed.



Joy Orzy receiving First Prize from PAC Past President, Ursula Reese, for her portrait, *Stratford Image*, at the PAC 7th Annual Juried Show in the Etobicoke Civic Centre Gallery. Urania Christy Tarbet juried the show.

(See back cover Joy's paintings)
Shady Lady)

Mini-bios.....

When **Frank Hall** walked away from the music business in 1984, he soon realized he needed another creative outlet. He tried a number of art forms: scrimshaw (an old traditional folk art), then sculpture (wood, clay and metal). Then three years of life drawing with a group of local artists. He spent two years in a playwright development workshop, and had a one act play produced at Theatre & Company in Kitchener. But the need to create was not satisfied until he returned to drawing and painting. Finding the pastel medium was like coming home. (See Frank's painting *Amish Country* on the back cover.)

Waltraud M. Bluml (Trudi) was born in Braunschweig, Germany and now lives in Winchester, New Hampshire. She has studied in the USA as well as in Europe. Urania Christy Tarbet is one of several instructors Trudi has trained with. She works in acrylic, oil, oil pastel, soft pastel and watercolour in both a studio setting and plein-air. She has exhibited widely and her works are in private collections in the USA, Canada and Europe.

Looking for a challenge?

Join **Ann Walsh** in her Winter Plein-air Workshop - three Saturdays in February at the Burlington Art Centre. On the warmer side, Ann will be teaching a beginners pastel course in Burlington, June 12 and 13, 2004. For more information contact Ann at: Telephone: 905-336-0993 or Email: lakwalsh@sympatico.ca . To keep herself busy in between workshops, she is teaching a course at Springbank in Missis-sauga.

Congratulations.....

Sally Jackson's painting *Jewel Rock* was awarded 5th prize in the Abstract Category of **The Pastel Journal - Pastel 100 Competition**. It will be published along with all the other prize winning paintings in the March/April 2004 issue. We are beating them to it See the back cover.

Bernice Beal accepted a commission for a painting of a local scene to be a gift to the popular, retiring mayor of the Township of North Dumfries, Joseph M. Martens. The painting entitled *In the Park, Ayr* was presented at a gala dinner on November 20, 2003, attended by several members of parliament, many dignitaries and over 350 people.

Barb Harris' painting Jammin at Piccolos and **June Gauthier's paintings The Flower Market and Friday Night at Aggie's** were the only three pastel paintings juried into **Convergence, Tom Thomson Memorial Art Gallery's, 41st Annual Juried Exhibition** in Owen Sound, November 21, 2003 to January 18, 2004.

Cathy Cullis' painting B. C. Stream was accepted into the **Visual Arts Mississauga's, 26th Annual Juried Show of Fine Art**, December 18, 2003 to February 7, 2004 at the Art Gallery of Mississauga. Still time to visit the gallery.

When naming PAC members who were represented in the **ECOAA's, Mystery in the Park Exhibition** in the last Newsletter we omitted **Barb Elmslie**. Barb sold two paintings in the show, *Openongo Fir* which won an Honourable Mention at the PAO 11th Annual Open Juried Show in Kitchener and *Lonesome Pine* (on our front cover).

Future Member Exhibitions/Shows.....

Catherine Webber-Kunz will be having her first solo show at **The Gallery in the Grove**, Hamilton Road at Wildwood Park, Brights Grove, Sarnia, Ontario. April 4 to 25, 2004. Opening Reception: April 4, 2004, 2 pm to 4 pm. You can see some of Catherine's paintings in the PAC's Online Gallery.

Paint-outs
No fee. No instructor.
No fuss. No Muss.
Just a lot of painting and a lot of fun.

We are looking for paint-out locations in different areas. If you have a spot in mind near you let our editor know. Our goal is to list them for the year in the Newsletter, however, if you suddenly get the urge, we do not need a lot of notice. A mass email will notify most of our members. For a paint-out all that is needed is, access to a washroom, a contact and directions. People who live within driving distance usually attend. The group is usually small (8 - 13). It is a great way to meet fellow artists in your area and share the energy of painting with a group. No need to provide food as everyone brown bags it.



PAC 2004 Members Show - Anastasia Gallery

6 Lakeshore Road West, Oakville, Ontario L6K 1C5

Gallery hours: Monday to Saturday 10 a.m. - 6 p.m.

905-845-0581

May 1 to June 24, 2004

Opening May 1, 2004 3 p.m. to 5 p.m.

Terms of Entry: This is an artist's choice show. Bring your best work. One work per member.

Open to all 2004 paid members of PAO Canada (PAC). Each member may submit **1 (one) piece** completed within the last 24 months. All work must be original; the final finishing layer must be predominantly dry pastel. The essential qualities of the painting must have been achieved with dry pastel. Work must not have been previously shown in any PAC Show or in the Oakville area. **Paintings must be for Sale.**

The Gallery will retain **40% commission on all sales.** *Please remember to account for this when pricing your work.* Paintings are insured while on the Gallery premises.

Fee: \$15.00 per member payable to Pastel Artists Canada.

Co-ordinator: Jessie Grant, 8 Iris Court, Carlisle, ON L0R 1H3 Tel: 905-690-0700 Email: jessie-nanny@sympatico.ca

Deadline for Entries: April 1, 2004 (latest postmark). Title and price listed on the entry form must be identical to the painting delivered. Labels and Show listings are made ahead of time from the information on the entry form and considered "official". **(First 50 entries accepted.)** Shipped works, will be accepted by the gallery.

Identification Label: Please copy this Registration Entry Form and attach to the back of your painting.

Framing: Paintings must to be suitably framed, ready to hang. Faulty framing can lead to rejection of the painting.

Delivery: Saturday May 1, 2004 10 a.m.-11 a.m.

Hanging of Show: May 1, 2004 11 a.m.

Annual General Meeting: May 1, 2004 1:30 p.m.- 2:45 p.m. Oakville Public Library, Navy Street, Oakville. The library is only a few minutes walk from the gallery. Long-term parking is located behind the library building.

Opening Reception: May 1, 2004 3 p.m. to 5 p.m.

Pick-Up: Friday June 25, 2004 and/or Saturday June 26, 2004 during gallery hours.

Directions to the Anastasia Gallery: From 401 or QEW exit Trafalgar Rd. South to Lakeshore Rd. Turn west. Cross Navy St. The Anastasia Gallery is on the south side of Lakeshore Rd. just past the bridge. For unloading only - limited parking at the back of the Gallery off Forsyth St. Meter parking on the street in front. See Newsletter for map.

Note: If possible, please send a photo/slide or computer image of your work for use in the show publicity and for the next Newsletter Cover to our Newsletter Editor by March 1, 2004. We are looking forward to another beautiful newsletter cover.

June Gauthier, R.R.#3, Flesherton, ON. N0C 1E0

Tel: 519 924 2202

Email: jgauthier@bmts.com

.....
May 1 to June 24, 2004

Registration Form 2004 Members Show - Please copy and attach to the back of your work.

Please mail entry form with cheque for \$15.00 made out to *Pastel Artists Canada*, to coordinator:

Jessie Grant, 8 Iris Court, Carlisle, ON. L0R 1H3

Artist Name _____ Entry Title _____

Address _____ Image Size: HxW _____

City _____ Postal Code _____ Price: _____

Telephone _____ Email _____



PAC 2004 Annual Paint-In/Out at the Bridgewater Retreat

June 11 to 13, 2004

Eldora Taylor has made arrangements for another great paint-in/out weekend at the Bridgewater Retreat near Tweed, Ontario. In the hope of fooling the black flies and mosquitoes Eldora has reserved one week later than usual. No instruction is offered, just come and do your own thing. The Retreat has a large studio for those who like to paint indoors and offers great scenic spots for those who like to paint out-doors. It is a time to renew old friendships and make new ones. It is a time to exchange painting ideas and techniques and to find new inspiration. This year we will be sharing the Retreat with a writers group, which be interesting.



The large bright studio

Arrive in the afternoon of June 11, 2004 for supper.
Paint all day June 12, 2004 stopping for breakfast, lunch and supper.
After breakfast on June 13, 2004 paint until lunch, then **depart**.

The Price: \$95.20 per day, per person, in shared cabin (tax included).
\$117.60 per day, per person, in single cabin (tax included).
\$117.60 per day, per person, (tax included) in shared accommodation in the Old River House. Note: The new owners think the Old River house has more to offer, therefore the increased rate. The Old River House only offers shared accommodation. One room has three beds.

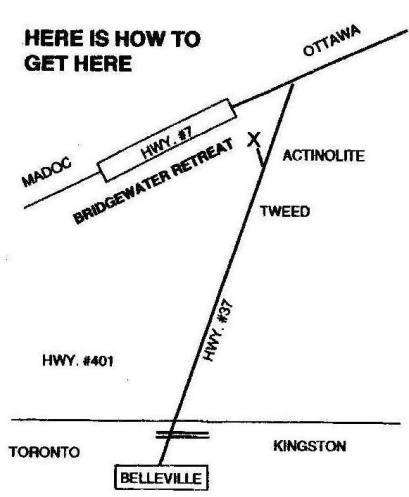


The Old River House

Deadline for registration: May 15, 2004
Deposit: \$50.00 per person to reserve a place. Balance to be paid on arrival.
Please bring your own bed sheets (single beds) and towels. Blankets and pillows supplied.

Coordinator: Eldora Taylor, Telephone: (April 1, 2004) 519-538-5181
Email anytime: eldorataylor@aol.com

Directions to the Bridgewater Retreat Centre:



From the South: Take #401 to Belleville, turn North onto #37 through Tweed to Actinolite. Look for Store Street, turn left and follow the Bridgewater signs.
From the North: Take #7 to #37, turn South 1/4 mile take the first right turn, Store Street and follow the signs into the Retreat.
If you get lost: Call Bridgewater Retreat: 613-478-5502.
Their website: www.bridgewaterretreat.ca The last time I looked the rates & events for 2004 had not been posted, but the views of the Retreat are great.

**Registration for PAC Annual Paint-In/Out at the
Bridgewater Retreat Centre
June 11 to 13, 2004**

Name: _____

Address: _____

City: _____

Postal Code: _____ Phone No. _____

My room-mate is: _____

Please find me a room-mate ()

My cheque is enclosed in the amount of \$ _____

**Please copy and mail this registration form with your cheque made out to: Pastel Artists Canada
c/o Eldora Taylor
RR 2
Meaford, ON
N4L 1W6**

Advanced Notice

**PAC 13th Annual Open Juried Show
"Purely Pastel"**

September 17 to 26, 2004
Women's Art Association (WAAC)
23 Prince Arthur Avenue, Toronto, Ontario

Juror: Claire Schroeven Verbiest of California
Coordinator: Lynn Ritchie
Slide Coordinator: Ann Walsh
Deadline for Slides: Postmarked no later than July 2, 2004.



This is the first time PAC will have a show in Toronto. The beautiful Victorian building that has housed the Women's Art Association for 75 Years is a landmark in the busy Yorkville area. The building has a remarkable history. In 1886 artist, Mary E. Digman gathered together a group of women artists to sketch, exchange ideas and develop their painting skills. Shortly thereafter, Lady Aberdeen, wife of the Governor General,

invited Mrs. Digman to Government House to discuss the possibility of organizing groups of women artists in order to promote an interest in their work. Many distinguished Canadian artists, including Emily Carr, Frances Loring, Florence Wyle and Dorothy Stevens have been actively involved with the Association over the years. The walls of the beautiful President's Room are graced by original works from the Group of Seven, in fact, A.Y. Jackson and Arthur Lismer were honorary members. The airy meeting room and gallery will be a wonderful showcase for our pastel celebration.

The show will be open to the public only on the two weekends of September 17, 18, 19 and 25, 26, 2004. During the week the exhibit will be on display and enjoyed by the many visitors to the WAAC Gallery attending art lectures, luncheons and meetings.

We will need volunteers for intake, hanging the show, plus manning the show for the two weekends. We plan to serve afternoon tea during those times. The Opening on Friday evening September 17, 2004, will be as special as always with the presentation of awards and prizes.

Please contact PAC and WAAC member, Lynne Ritchie, if you can help in any way. Telephone: 416-604-3315 or Email: lynne.ritchie@attcanada.net

Call for Entry Registration from will be in the next Newsletter.



Communicating with PAC members

Barb Elmslie brings us up to date with PSEC's annual **Pastelist** show at Ogiliv's in Montreal from October 31 to November 8, 2003. "The Show was a success with a record number of visitors, 1,400 votes for the Public's Choice - to which must be added at least another 20% who did not complete their voting slips. There were 26 paintings sold for a total of \$12,500 - another record. PCA member **Ann Walsh** was 3rd runner up in the Public's Choice with her painting **Poppy Drift**. PAC members, **Alexina Weigand, Normand Baril, Inak Gieysztor** and **Barbara Elmslie** each had paintings in the show. **Normand Baril** became a signature member of PSEC this year and both Barbara and Inak sold a painting.



Eldora Taylor, always on the move!

Rosemary Simpson writes: Where ever Eldora goes she finds a paint-out, the latest in Chapala Mexico. She was just recently involved in the first art show where she is staying and surprise, surprise, was visited by Tim Daniels our web administrator and his wife Virginia, who are touring Mexico. The world gets smaller and smaller. Eldora is our Mid-West Area Rep., but she may have to take on Mexico next. Eldora never misses her PAC Newsletter, she picks it up online. **Ole Eldora!**

Inak Gieysztor wrote to tell us her solo show in Montreal, November 5 to 15, 2003 was quite successful, she had a lot of positive comments from the visitors and 14 paintings have now gone to new homes. Unfortunately midway through the show both she and her husband Jan came down with bad colds and could not really enjoy all the activity. Inak and Jan are both well and enjoying a few week in the Mexican sunshine while the paintings are enjoying their new homes.

PAC has become a member of the Oakville Arts Council. This will be of particular interest to our members in the Oakville area. (Ottawa area members see *Call for Artists* on page 11.) PAC will receive the Arts Council's newsletter which lists events of interest, calls for entry, etc. There is a lot of things going on. PAC members can obtain an individual membership for \$20 per year instead of the usual \$30.

PAC, as noted in Cindy's membership report, has members all across Canada, in the United States and even the United Arab Emirates. If you have local news of events, calls for entry, calls for artists, etc., we will be glad to print the information. Look for the Newsletter deadline on the back page..



Pastel Pizzazz with Claire Schroeven Verbiest, KA, PSA
5 Day Workshop in the Ottawa Area
September 20 to 24, 2004

PAC is pleased to sponsor a 5-Day workshop with Claire Schroeven Verbiest, a caring and well-organized instructor. This workshop is open to students of all levels. Landscapes, night scenes and still life will be the genres of choice. The workshop will take place mainly indoors with some plein-air time. The Course will include demonstrations, critiques and a slide presentation.

Clair Schroeven Verbiest is a Belgian native, fluent in both English and French. She lived in the Congo and in Germany before moving to San Jose, California with her husband and their two children. She is an award-winning artist and a signature member of several art societies. Verbiest is considered one of the finest pastel and watercolour artists in the San Francisco Bay Area. Come and share Claire's enthusiasm and joy for pastel a versatile, direct and brilliant medium. You will leave equipped with the knowledge needed to create strong and spirited paintings.

Claire's statement: "I paint because I must and I am a painter most of the time. My goal is to create indelible images that transform the ordinary into the extraordinary. My desire is to represent the absolute truth of what I see and to capture the moment in time that best portrays my subject. My obsession is to charm the eye with intense colour, dramatic light and strong design."



Claire Schroeven Verbiest in her California Studio

(See two of Clair's paintings on the Spring Iback cover.)

Price: 5 days instruction, \$475 for members, \$525 for non-members.

Participants: Minimum of 10, maximum of 12.

Location: Home Studio of Mette Baker, 830 Berry Sideroad, RR#1, Dunrobin, Ontario. Telephone: 613-832-3737
Email: mette@canoemail.com.

We are very fortunate that Mette is opening up her fabulous studio for this workshop. It is spacious, filled with light and provides immediate access to her wonderful property. The autumn colours, wildlife and lake offer endless painting possibilities. Contact Normand for places to stay in the area should that be necessary. An information package will be sent to participants after registration.

Coordinator: Normand Baril, 24 Merkel Drive, Nepean, Ontario K2J 1Z8 Telephone: 613-825-7840
Email: normand103@sympatico.ca

Deadline for minimum participants: August 1, 2004. PAC Members will get preference until June 1, 2004. **A deposit is necessary to hold your place.** The balance is payable August 1, 2004. After June 1, 2004 registration will be open to non-members. This promises to be fantastic workshop. No refunds after August 1, 2004.

Registration - Pastel Pizzazz, Ottawa Area, September 20 to 24, 2004 with Clair Schroeven Verbiest

Name: _____ **Phone No.** _____

Address: _____ **Email:** _____

City: _____ **Postal Code:** _____ **Member of PAC:** Yes No (Circle one)

Deposit: _____ **Member \$250, Non Member \$280. Balance Payable: August 1, 2004**

Please send this registration with your cheque(s) payable to Pastel Artists Canada to: Janet Parker, PAC Treasurer
71 Watson's Lane
Dundas, ON L9H 1T4

Pastel Artists Canada - Purely Pastel Spring Issue, 2004

It is not just PAC members who communicate with us. If you have looked at our web site www.pastelartists.com, you will know that it has a **Tips and Tricks Section** compiled by our members. The information is excellent and here are a couple of emails received from people who have discovered it:

"I am the publicity officer of the South Coast Pastel Society, that is, we are in Australia, on the south coast of New South Wales, south of Sydney. We are an amateur club of mainly retired folk who enjoy painting in our beautiful area. I have stumbled across your Tips and Tricks page using Google and would like your permission to reprint some of your "tips and tricks" advice in our local paper. Our Society has been provided with space in our local community paper and sometimes it is difficult to come up with articles if we are not having exhibitions, etc. I publish tips from our workshops and from members, but was thinking about running a tip per article for the next few months, using some from your page. So I am seeking your permission to share your member's knowledge with us, if you don't mind."

Thank you, *Roslyn West*, Publicity Officer.

"I am in high school and I have been drawing in pastel for awhile. Right now I'm drawing a large portrait (over 3 feet tall) and I was wanting to know how I could protect it and hang it. I want to hang it in my room or in our basement but it may be too big to frame (and too expensive). In either place the picture won't get much contact. I want to know if there are any good ways of displaying it and protecting it using a fixer, matting.....I appreciate your time."



Sharing Pastel Info.....

Slide into Home Plate with the help of Rosemary Simpson.

As you have noticed "tis the season for participation". This makes a good case for systematically taking slides of your work and taking more than one. Ursula Reese our past president got me started doing this a number of years ago and it was sage advice. Urania Christy Tarbet, president of IAPS always makes 12 slides of each piece of her work and stores them, ready for any show or magazine opportunity that comes her way.

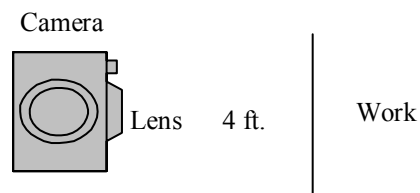
If you want to get started here are a few tips gleaned from friends and bad experiences. (Thank you Ann Walsh.) Since there are so many different cameras, we will assume that you know your camera and its capabilities.

A good camera store is the first place to visit. The quick stop shops do not have a good selection of slide film or in most cases, the personnel to help you. Their slide film if they have it, is costly as they do not have much call for it. Their

processing will also be higher in price as they have to send the film out. Try to find a camera store that does their own developing. You will save money and time.

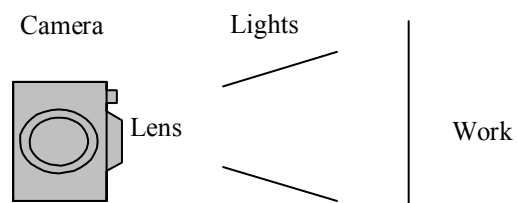
Even a point and shoot 35mm camera will work with slides but a single lens reflex (SLR) camera makes it easier when placing the painting within the camera frame. Tungsten film gives the truest colour but you need the appropriate lighting. If you are taking your shots outside then Kodak Ektachrome is a good choice.

Outdoor Setup. Find a spot ... with north light but not in direct sunlight and setup your camera. Mount your work on a black background. Black velveteen is a good choice as it does not show creases and can be brushed off if any pastel dust settles on it. Black foamcore also works well. Set the camera on a level surface usually 4 ft. away (unless you have a special lens) with the lens at right angles to the centre of the painting. (I found a tripod was a very good investment at this point.) Fill the camera view finder with the image of your work. Some paintings do not fit into the 2x3 rectangle the camera provides, so choose two flat edges to square up the image. Focus. **Take multiple shots as this is cheaper than getting copies made later.**



Indoor Setup. First choice - Tungsten slide film for 35mm camera plus Tungsten lights for 2 photography light stands. **Second choice** - is Kodak Ektachrome slide film with blue indoor lights. This is an investment but with care the stands and bulbs will last a long time. The bulbs must match the type of film used.

Again the camera lens must be perpendicular to the surface of the work. This avoids distortion of the image. I found a large inexpensive bulletin board that I mounted on a wall worked great for attaching the black background and then pinning the work to be photographed on top. Place the lights on either side of the work at 45 degree angles to the work. Place your camera on a tripod at the apex of the triangle making sure the lens is focused on the centre of the work. A gismo called a shutter switch can be attached to a 35mm camera so that you can take pictures without jiggling the camera.



Pastel Artists Canada - Purely Pastel Spring Issue, 2004

Take multiple shots. Fill the view finder with the image. FOCUS. Make sure the lens is perpendicular to the work and the camera is level.

After the slides have been developed you can cover or crop any unwanted areas with special silver tape. Silver automotive tape works just as well as the more expensive tape found in camera stores. Use an exacto knife to cut the tape to size. Do not put any tape on the frame.

If all this is just too much for you, consider working with a photographer or pool resources with a fellow artist.

We are always looking for members to help us out in this section *Sharing Pastel Info....Can you help?* Our new members would benefit from any info the more seasoned members could spare and they in turn may benefit from any new info our news members could provide. Participate, share your pastel knowledge with us. *Editor.*

Call for Entries:

PAC Master Pastellist - Deadline: March 31, 2004

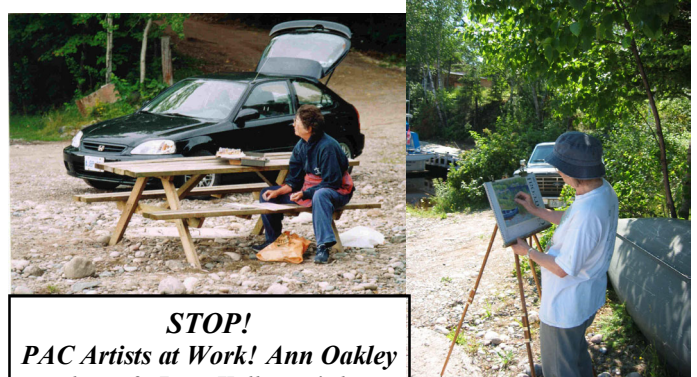
If you are ready to participate in the Master Pastellist call for entry, do it now. The objective is to provide a challenge for a who are working at an advanced level of proficiency and to establish a benchmark of high accomplishment in the soft pastel medium in Canada. You are not competing with other painters. You are judged only on your own work. You may submit 5 to 10 slides that best represent a body of work done by you. Each of three judges will assess the slides separately. Please note and only if possible we would appreciate 3 copies of each work. The extra copies will be returned to you. The judges in our inaugural year are highly respected internationally for their knowledge of pastel and dedicated support of artists working with the medium. You can download the entry form from the PAC web site, or for a mailed copy contact: Sally Jackson, 165 Gloucester Ave., Oakville, ON L6J 3W3 Telephone: 905-844-0207 or Email: sally@jackson.to.

Paint the Huron Shores Art Competition, March 13 to April 4, 2004, Lambton Heritage Museum, Grand Bend, Ontario. A juried competition for "representational celebrating the beauty of the Lake Huron tourist region from Sarnia to Tobermory and including Georgian Bay. Awards: \$2,000 Best in show, \$500 Second Place, plus "Peoples' Choice" and "Awards of Merit". Fee: \$20 for the first piece, \$10 for each additional entry. For more information: Barry Richman, P.O.Box 127, Grand Bend, Ontario, N0M 1T0. Website: www.huronart.com. Email: huronart@ezlink.on.ca. **Slides must be submitted before February 16, 2004. Hand-delivered or shipped work for jurying must arrive by March 1, 2004.**

Visual Arts Alliance 21st Annual Juried Open Exhibition, April 19 to May 21, 2004, Houston, Texas. Open to all artist 18+, in all media, except audio, video or performance art.

Juror: Sally Sprout. Awards: \$2,500 US in cash and prizes. Fees: \$30 US for 1-3 works. For prospectus: Send SASE to Christie Coker, 5507 Evening Shore, Houston, Texas, 77041 or email: christiecoker@earthlink.net. **Slides Due: March 1, 2004.**

IAPS 7th Exhibition. June 1– July 25, 2004 in the Binney & Smith Gallery at the Banana Factory in Bethlehem, Pennsylvania. The Juror of Selection is Margaret Evans and the Judge of Awards is Alan Flattmann. Awards: Grand Prix d'Pastel - \$1000, Gold - \$700, Silver - \$500, Bronze - \$250 & And 6 Honourable Mention - \$100 each. **Slides must be received by April 1, 2004.** All PAC members in good standing are also members of IAPS and may participate. You will need to send proof of 2004 PAC membership with your application. The full form can be downloaded from the IAPS web site. www.pastelinternational.com or for a mailed copy contact Vicki Brophey, 24 Marilyn Dr. #204, Guelph, ON N2H 8E9. Please send a Stamped Self Addressed Envelope with your request. Telephone: 519-822-8603 Email: calles@kw.igs.net



STOP!
PAC Artists at Work! Ann Oakley above & Joan Kelly at right.

Call for Artists:

This call for artists will be of special interest to our members living within a 150 kms radius of Ottawa.

Galleriart is a new co-operative art gallery in the trendy By-Ward Market area displaying original sculptures, drawings, paintings and mixed media artworks by 87 local artists. The gallery is run by its member artists, showcases Featured Artists, stages Special Events and first opened for business on June 20, 2003. There are 13 spaces still available for new artists to join the team. **A jurying session for prospective new members will be held on Monday February 16, 2004, between 10 am and 12 noon.** The location is: 111 York Street Ottawa, ON K1N 5T4. Application forms are available at Galleriart, 789-5298, or you may contact the Membership Chair, Dianna Boyd, Email: RobertBoyd@rogers.com for more information.

This Newsletter was printed by:

OniTECH.CA

YOUR IMAGE IS OUR BUSINESS

Phone: 519-934-1664

Email: INFO@ONITECH.CA

Website: ONITECH.CA

Paintings by Claire Schroeven Verbiest, KA PSA (See page 9)



The Red Door

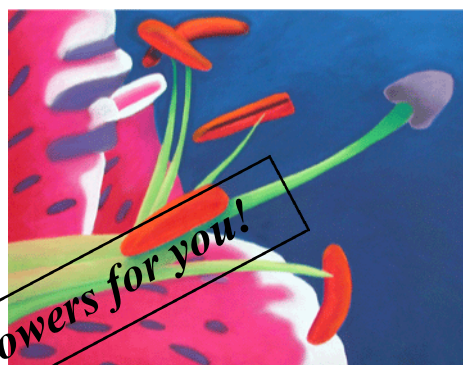
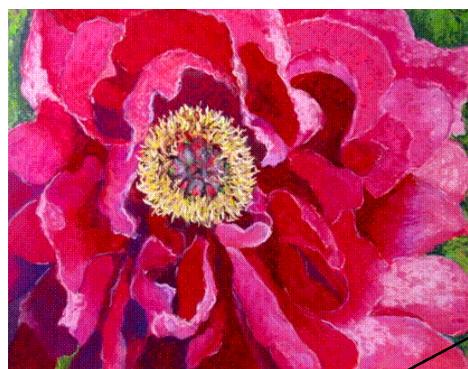


Autumn Light

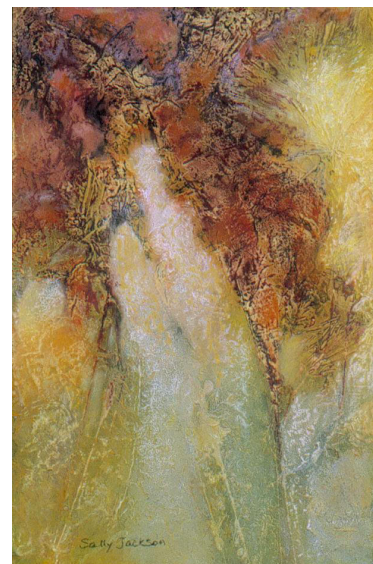
Mini-Bio (See page 5)



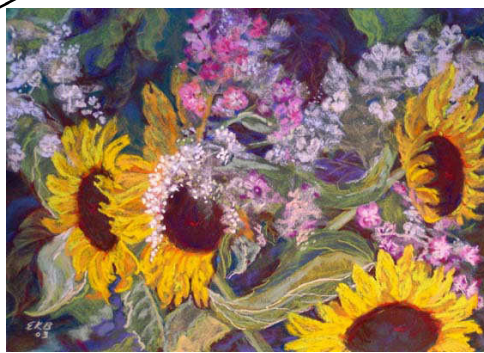
Amish Country by Frank Hall



Seen next in Pastel Journal

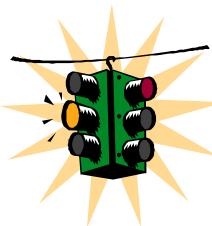
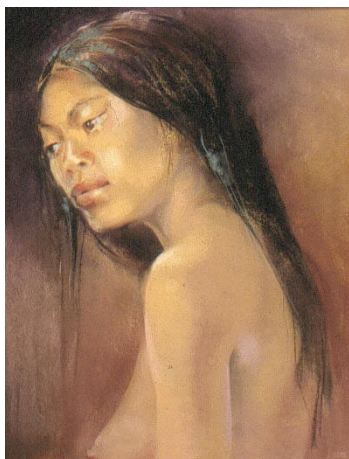


Jewel Rock by Sally Jackson
(See page 5)



Shady Lady
by the late
Joy Orzy

(See tribute by
Ursula Reese
on Page 5)



Next Newsletter
Deadline
April 15, 2004

Send your
information on
shows, workshops,
paint-outs, tips
and photos of
events to:

Newsletter Editor:
June Gauthier
R.R. #3
Flesherton, ON. N0C 1E0
Tel. & Fax. 519-924-2202
Email: jgauthier@bmts.com